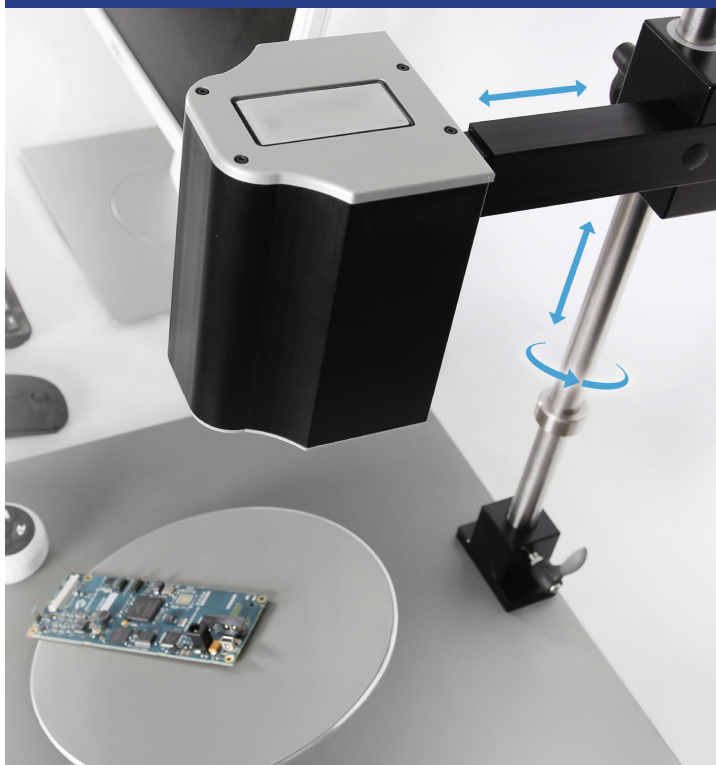
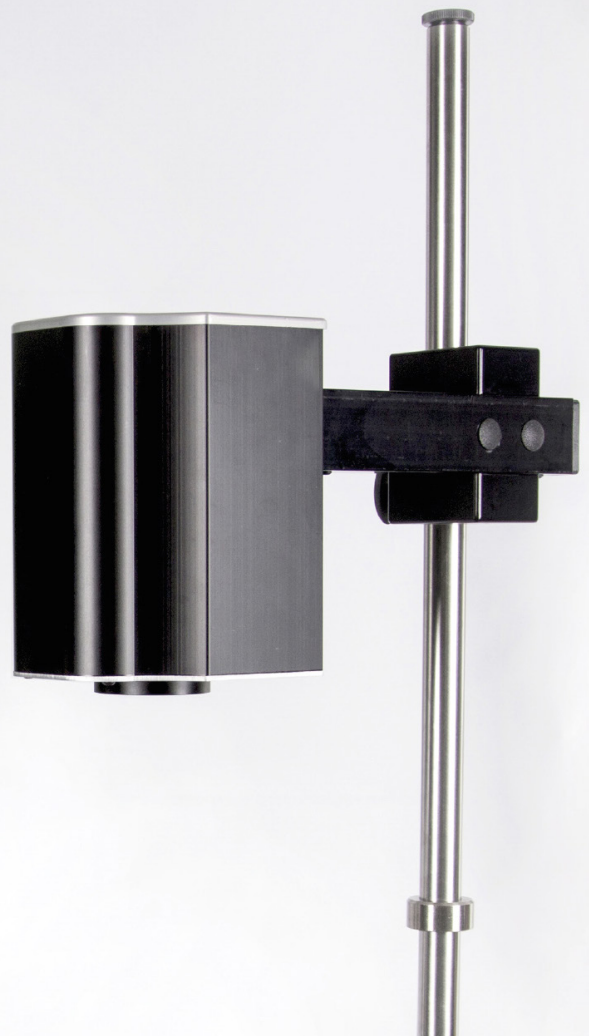


FULL HD DIGITAL MICROSCOPE *

TEK-FLEX-XY

- **Adjustable** working distance
- **FHD camera** 1920x1080
- **Wireless** remote controller
- **Auto** or **Manual** focus
- **Stand-alone** real time images (DisplayPort)
- **Measurement software** for PC (USB port)
- **Ethernet** connection to share screens simultaneously
- **Store images** directly on USB stick, no PC needed
- **Ergonomic**
- **ESD safe**



Get exceptional sharp images for inspection, fault analysis and more with TEK-FLEX-XY.

TEK-FLEX-XY is a full high-definition desk optical inspection system with a telescopic arm for precise XY positioning and an adjustable Z-axis height from 310mm to 60mm.

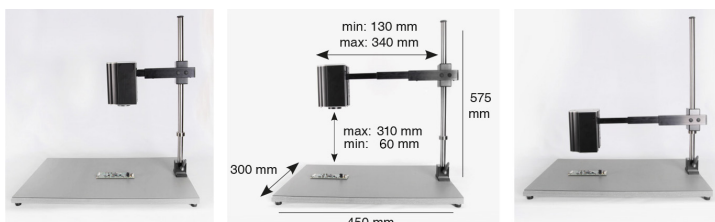
The camera provides optical magnification of 46x (27" monitor) and digital magnification up to 140x (27" monitor)**. ESD safe and equipped with both manual focus and **impressively fast autofocus**, TEK-FLEX-XY delivers high-quality, distortion-free 1080p FHD images with excellent depth of field and no delay.

Telescopic movement

The camera arm's telescopic movement is specifically designed for the inspection industry, allowing users to work efficiently in compact spaces.

* TEK-FLEX-XY has to be connected to a monitor or PC. Monitor/PC not included

** Digital magnifications beyond these values are possible, but they bring noise to the image.





Easy to Use

Image acquisition and documentation are now effortless, directly on the included USB stick or to a PC.

One click on the remote and your picture is saved to your USB drive. TEK-FLEX-XY also enables quick, efficient measurement of parts using point-to-point or overlay methods.

With a user-friendly menu and a simple operating system, **TEK-FLEX-XY** is perfect for operators in high speed production environments.

Hardware specifications



SYSTEM	
Working distance	Adjustable
Lighting	No
Ethernet	Yes
Monitor Requirements	FHD (recommended)
Signal Output	1920x1080, 60 fps, DisplayPort
Signal Output USB (PC)	1920x1080 USB (PC)
ESD safe	Yes
Plug Type	Type C (EU)
AC input	100-240V, 2.0A, 50-60Hz
DC output	12.0V - 5.0A, 60.0W
SOFTWARE	
Operating System	Windows 10 or higher

CAMERA	
Optical Magnification	46x optical - 27" Monitor
Image Sensor	1/2.8"
Pixels	2,13 million effective pixels
MONITOR USE	
Remote controller	Yes
Zoom	Yes
Brightness	Yes
Focus	Auto/Manual
Picture Mode	Color / Grey scale
Monitor size	Optional
Monitor format detect	No
Image capture	Directly on USB memory stick