

Product Datasheet

Product code: **MS15X**

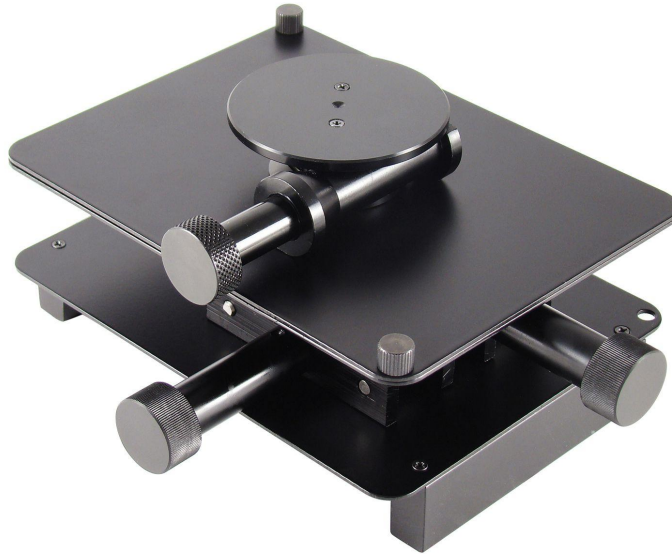
Product type: Digital Microscopes

Made in: Taiwan

Description: The MS15X is an advanced XY table that can be used independently or in combination with the MS35B or MS36B column stands. The MS15X X/Y table base with detachable rotating table is designed for use with all sorts of applications that require fine examination in an X- and Y-axis movement. With the 360 degree rotating table, one can easily carry out all kinds of precision examinations. The MS15X can be used stand-alone or attached to the MS35B and MS36B stands (with the included C-Clamps).

Special features: Rotating

Picture:



Product dimensions:	OAL	152.0 mm – 5.984 inch
	Width	127.0 mm – 5.000 inch
	Height	76.0 mm – 2.992 inch